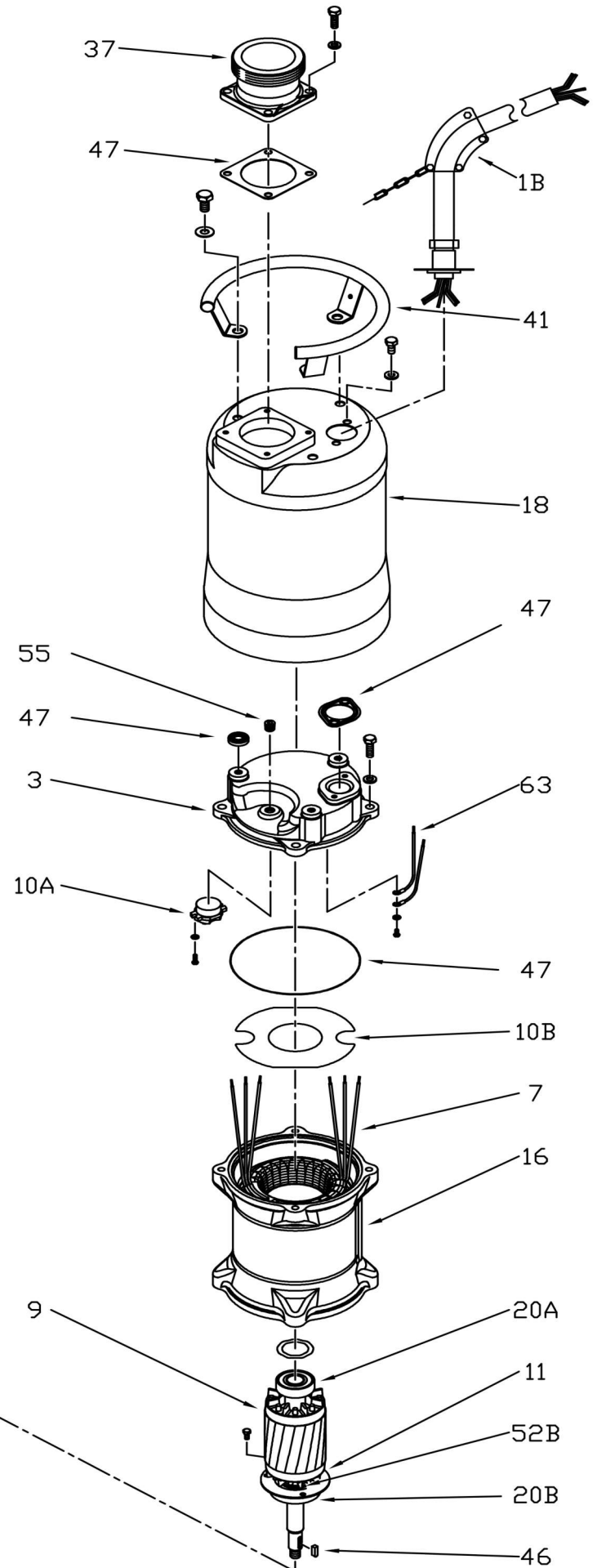
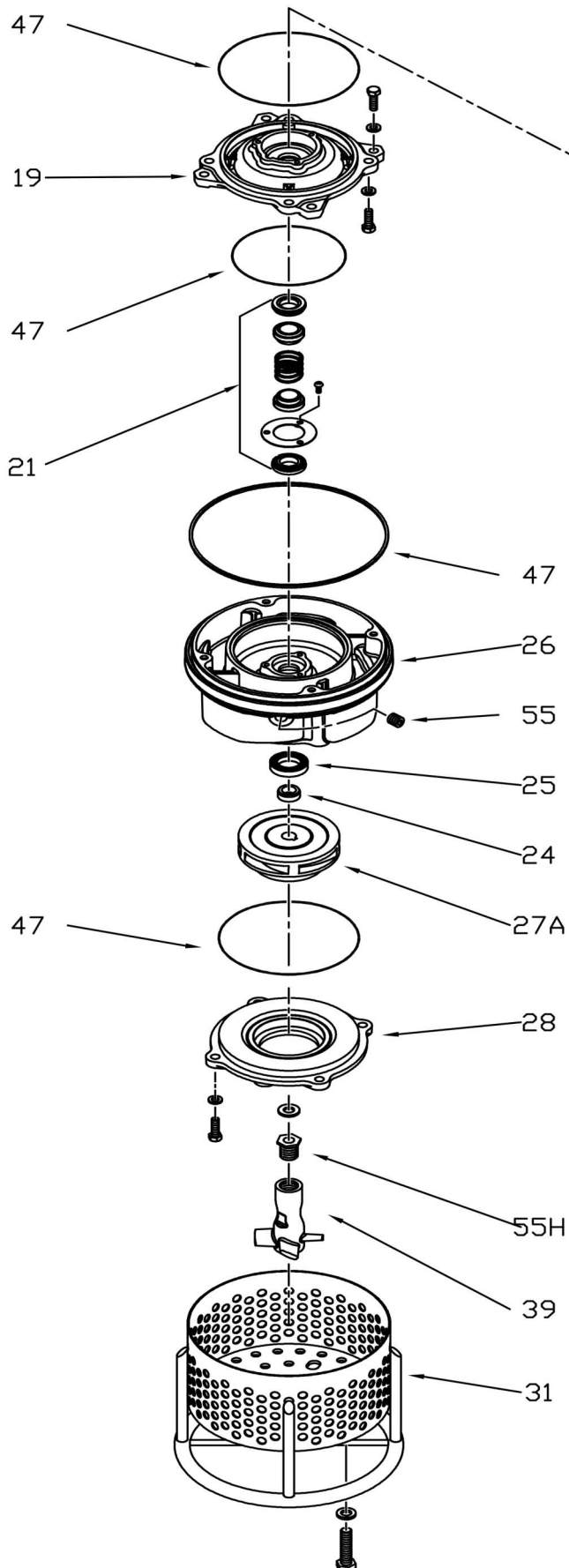


LWAE15 & 22



LWAE-SERIES

	Pump Model	LWAE15	LWAE22	LWAE37
Pos. No.	Part Description	Item #	Item #	Item #
1	CABLE, POWER, SJOW, 12/3 - 15M, LWA 2200	-	-	-
1	CABLE, POWER, SJOW, 14/3 - 15M, LWA 1500	-	-	-
1B	CABLE, POWER, ASSY., SOOW 14-5, 230, 460, 575V	204225	204225	-
1B	CABLE, POWER, ASSY., SOOW 12-5, 230, 460, 575V	-	-	200289
2	BASE, CABLE	-	-	-
3	COVER, MOTOR HOUSING, CI	204269	204269	204270
6	BRACKET, LWA1500-2200	-	-	-
7	STATOR, 2HP, 230/1/60, 3600 RPM, CLASS F	-	-	-
7	STATOR, 2HP, 230/460/ 3/60, 3600 RPM, CLASS F	204274	-	-
7	STATOR, 2HP, 575/3/60, 3600 RPM, CLASS F	204275	-	-
7	STATOR, 3HP, 230/1/60, 3600 RPM, CLASS F	-	-	-
7	STATOR, 3HP, 230/460/3/60, 3600 RPM, CLASS F	-	204276	-
7	STATOR, 3HP, 575/3/60, 3600 RPM, CLASS F	-	204277	-
7	STATOR, 5HP, 230/460/3/60, 3600 RPM, CLASS F	-	-	204278
7	STATOR, 5HP, 575/3/60, 3600 RPM, CLASS F	-	-	204279
9	ROTOR, SHAFT ASSY., 2HP, 1 PHASE, 304 SS	-	-	-
9	ROTOR, SHAFT ASSY., 2HP, 3 PHASE, 304 SS	204282	-	-
9	ROTOR, SHAFT ASSY., 3HP, 1 PHASE, 304 SS	-	-	-
9	ROTOR, SHAFT ASSY., 3HP, 3 PHASE, 304 SS	-	204283	-
9	ROTOR, SHAFT ASSY., 5HP, 3 PHASE, 304 SS	-	-	204284
10	SWITCH, OVERLOAD 3HP, 230V, 1PH, LWA2200	-	-	-
10	SWITCH, OVERLOAD 2HP, 230V, 1PH	-	-	-
10A	SWITCH, OVERLOAD 5HP, 230V, 3PH	-	-	204316
10A	SWITCH, OVERLOAD 2HP, 230V, 3PH	204311	-	-
10A	SWITCH, OVERLOAD 3HP, 230V, 3PH	-	204312	-
10A	SWITCH, OVERLOAD 2HP, 460V/575V, 3PH	204310	-	-
10A	SWITCH, OVERLOAD 3HP, 460V, 3PH	-	204313	-
10A	SWITCH, OVERLOAD 3HP, 575V, 3PH	-	204314	-
10A	SWITCH, OVERLOAD 5HP, 460/575V, 3PH	-	-	204315
10B	PLATE, OVERLOAD SWITCH	204330	204330	204331
11	RETAINER, BEARING	200139	200139	204285
12	SWITCH, CENTRIFUGAL	-	-	-
13	COVER, CENTRIFUGAL SWITCH, LWA 1500-2200	-	-	-
14A	CAPACITOR, RUN, LWA 1500-2200	-	-	-
14B	CAPACITOR, START	-	-	-
16	FRAME, MOTOR	204287	204287	204288
18	HOUSING, OUTER, 304SS	204291	204291	204292
19	BRACKET, BEARING	204293	204293	204294
20A	BEARING, UPPER, LWA	200088	200088	200088
20B	BEARING, LOWER, LWA	200959	200959	200968
21	SEAL, MECH., SI/SI X CARB/CER	204295	204295	204295
24	BUSHING, LIP SEAL, 304SS	200096	200096	200096
25	SEAL, LIP	204296	204296	204296

**All 1 HP and up BJM mechanical seal elastomer material is FKM

Last Updated on 6/2/2016

LWAE-SERIES

26	VOLUTE, HARDENED DI	204297	204297	204297
27	IMPELLER, HI CHROME CI	204298	204299	204300
28	COVER, SUCTION WITH WEAR RING PRESSED	204301	204301	204301
31	STRAINER, BOTTOM COVER	204302	204302	204302
37	ADAPTER, DISCHARGE, 3" MALE NPT	204646	204646	204646
39	AGITATOR, HARDENED DI	204303	204303	204303
41	HANDLE, LIFT	204304	204304	204304
46	KEY, IMPELLER	204305	204305	204305
47	KIT, O-RING	204307	204307	204307
53F	SPACER WASHER (LOWER BEARING)	204320	204320	200996
55	PLUG, OIL, LWA	200138	200138	200138
55H	STUB, AGITATOR JOINT	204321	204321	204321
55L	STUB, AGITATOR JOINT	-	-	-